

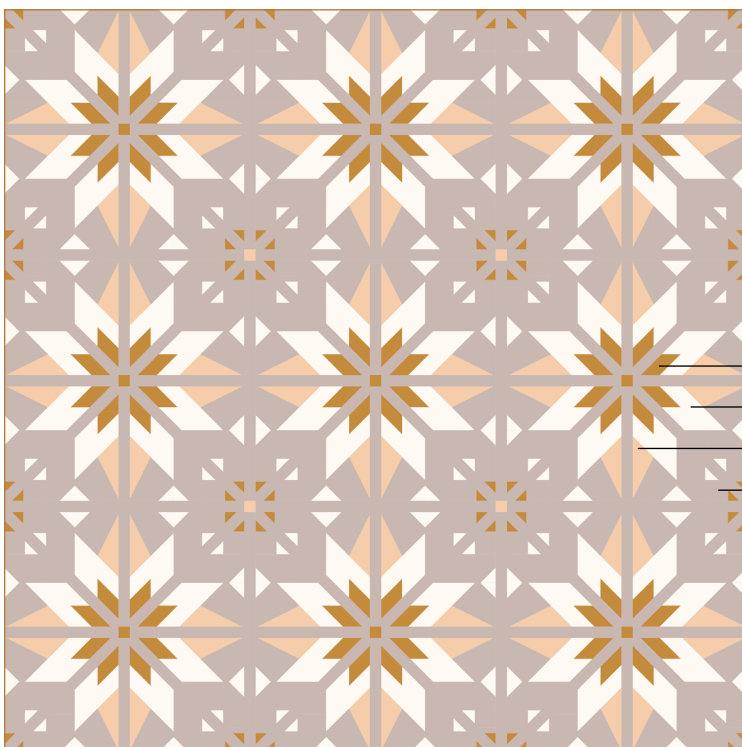
SWEET CREEK

A quilt pattern by Heather Heck of Heck Yes Sew Co

FABRIC REQUIREMENTS

	Mini 24" x 24" (1 block)	Runner 21" x 65" (3 blocks)	Baby 43" x 43" (4 blocks)	Throw 65" x 65" (9 blocks)	Twin 65" x 87" (12 blocks)	Queen 87" x 87" (16 blocks)	King 109" x 109" (25 blocks)
COVER VERSION							
A	1/8 yard or (1) F8	1/4 yard	1/3 yard	5/8 yard	7/8 yard	1 yard	1 1/2 yards
B	1/4 yard or (1) FQ	2/3 yard	7/8 yard	1 7/8 yards	2 3/8 yards	3 1/8 yards	4 7/8 yards
C	1/8 yard or (1) F8	3/8 yard	1/2 yard	7/8 yards	1 1/8 yards	1 1/2 yards	2 1/4 yards
FAT QUARTER MIX & MATCH VERSION							
# FQs	---	(4) FQs	(6) FQs	(12) FQs	(16) FQs	(22) FQs	(34) FQs
BOTH VERSIONS							
BG	5/8 yard	1 1/4 yards	1 5/8 yards	3 5/8 yards	4 3/4 yards	6 3/8 yards	9 3/4 yards
Binding	1/4 yard	1/2 yard	1/2 yard	5/8 yard	5/8 yard	3/4 yard	1 yard
Backing	7/8 yard	1 1/2 yards	2 3/4 yards	4 1/8 yards	5 1/3 yards	8 1/8 yards	9 3/4 yards

COVER VERSION



Fabrics featured in the Cover Quilt:
Art Gallery Fabrics - Pure Solids

- A Raw Gold
- B Creme de la Creme
- C Toasty Walnut
- BG Potter's Clay

Cover Version - Throw Size

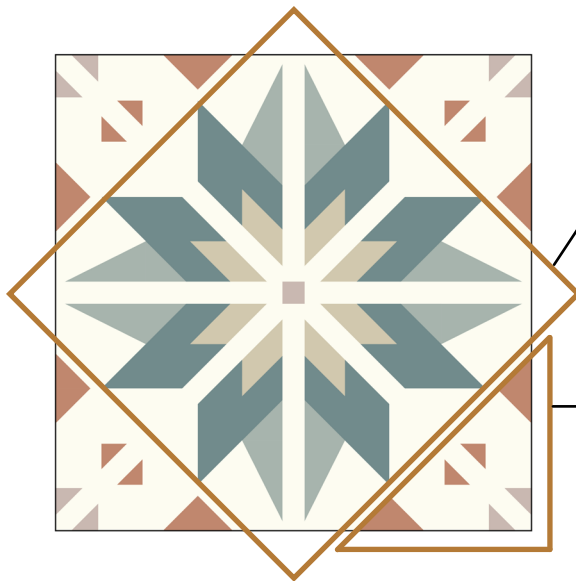
FQ MIX & MATCH VERSION



FQ Mix & Match Version - Throw Size

Fabrics featured in the FQ Mix & Match Sample Quilt: Art Gallery Fabrics - Pure Solids

Star	FQ 1	Thistle
	FQ 2	Snapdragon
	FQ 3	Georgia Peach
	FQ 4	Ocean Fog
	FQ 5	Spruce
	FQ 6	Hemlock
	FQ 7	Machiatto
Corner	FQ 8	Smooth Pebble
	FQ 9	Raw Gold
	FQ 10	Slate
	FQ 11	Sienna Brick
	FQ 12	Potter's Clay
	BG	Creme de la Creme



FQ Mix & Match Block

Star: The Star FQs will be mixed and matched to make the star motif. Choose **feature colors**.

Corner: The Corner FQs will be mixed and matched to make the corner motif. Choose **accent colors**.